

# IEP Home-School Meeting

Sunday 25th August 2024



# Today's Agenda

Greeting from directors

School protocols

Meet the teachers

Test and homework

Taking leaves

Security Policy

Dropping off things

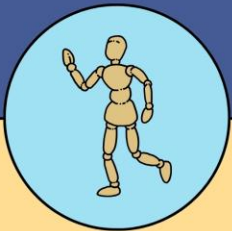
Quota for M.1 & M.4

School projects

Communication channels

New facility

Dropping off & Picking up students



# Greeting from the director and assistant director of IEP



Dr. Apunchanit Jenjit

Director of Piboonbumpen Demonstration School

Ms. Natamon Keeratichotigool

Assistant Director of International Education Program  
for Basic Education (IEP)





# School protocols

## Accident or incident

- o The student contacts the teacher who stays closest / in class / nearby, and that teacher contacts the student's homeroom teacher.
- o When an accident or incident happens, the injured student must be sent to the nursing room on the 1st floor or BUU hospital if it is severe injury.
- o Homeroom teacher contacts the student's parents.



# School protocols

## Accident or incident

- o The student contacts the teacher who stays closest / in class / nearby, and that teacher contacts the student's homeroom teacher.
- o When an accident or incident happens, the injured student must be sent to the nursing room on the 1st floor or BUU hospital if it is severe injury.
- o Homeroom teacher contacts the student's parents.



# School protocols

## Fighting or Bullying

- o The student contacts the teacher who stays closest / in class / nearby and that teacher contacts the student's homeroom teacher.
- o Homeroom teacher contacts head of discipline and head of primary.
- o The head of discipline investigates the students and witnesses, and has the students write down the incident.
- o The head of discipline contacts the student's parents to have a meeting and discussion about behavior scores deduction.



# Taking leaves

## taking leaves

- o To take leave, parents must communicate with homeroom teachers in Line group or DM to confirm.
- o Homeroom teachers must forward the info to subject teachers.
- o Sick leave - Students must submit medical certificate if the sick leave takes more than 2 days.
- o Personal/business leave - Students must submit leave form 3 days ahead.
- o Temporary leave during school day - Leave form must be signed by homeroom teacher or subject teacher and head of discipline.

# Meet the Teachers

Meeting with homeroom teacher or subject teacher, or administrator

- o Parents make appointment with the homeroom teacher.
- o Homeroom teacher contacts subject teacher and find available time for both ends.

Meeting with administrators

- o Parents make appointment with a staff in administrative office.
- o The administrative office staff contacts back to the parents for availability for both ends.



# Test and homework

- o Quizzes can be asked to see by parents, but are not allowed to be given.
- o If the parents would like to discuss about their kid's studying or behavior, they can make appointments with the subject teacher or homeroom teacher to discuss together.

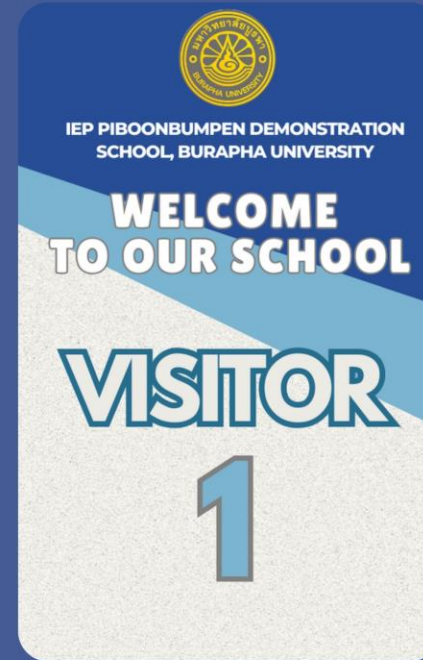


# Security Policy

- IEP staff must wear ID card all the time.
- Visitor must exchange ID card or card authorized by government with visitor card.
- Parents are allowed to be on the 1st floor, in the lobby area, and cafeteria.



IEP Staff



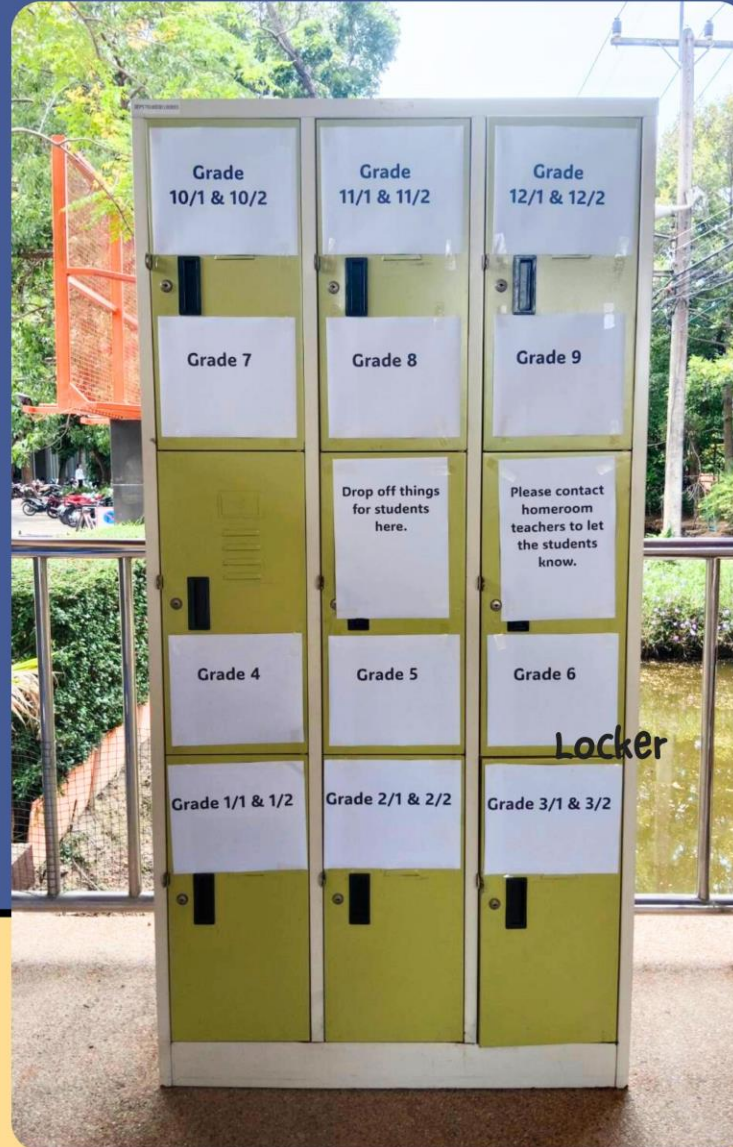
Visitor

- Parents are not allowed to be on the 2nd floor nor the 3rd floor, unless they are invited for meeting or school visit.
- Parents who would like to drop things for students must leave stuff in a locker at security guard.



# Dropping off things for students

- Parents who would like to drop things for students must leave stuff in a locker at security guard.



- Primary - Parents contact homeroom teachers to pick up things left.
- Secondary - Parents contact homeroom teachers / students to pick up things.



# Quota for M.1 & M.4

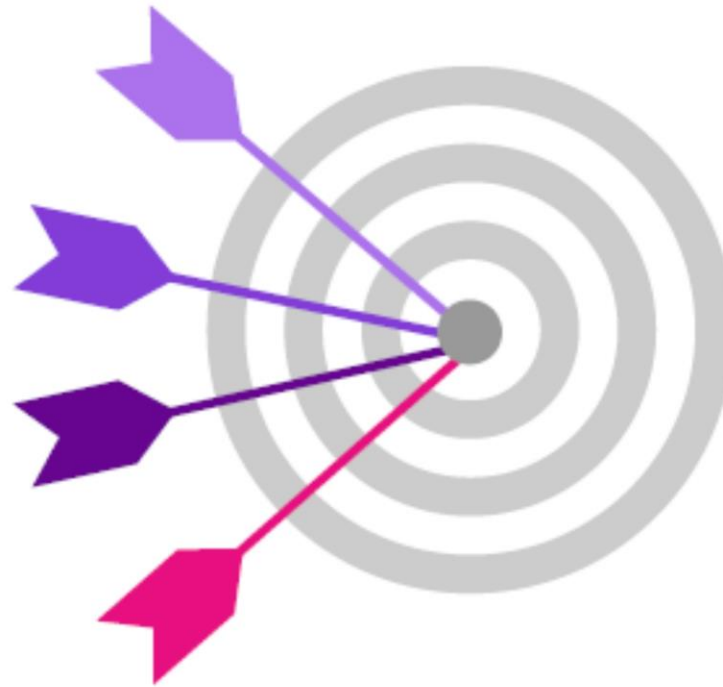
## Program Information

Regular

SAM

LIP

IEP



Regular

The most study in Thai Language

SAM

Science and Mathematics

LIP

Language Intensive Program

IEP

International Education Program for Basic Education



# Quota for M.1 & M.4

## Quota Requirements for M.1

Consider from G.4-G.5

### IEP

- 1.GPA. = 2.50 or above
- 2.English = 3.00 or above

### SAM

- 1.GPA. = 3.00 or above
- 2.Science = 3.00 or above
- 3.Maths = 3.00 or above

### LIP

- 1.GPA. = 3.00 or above
- 2.English = 3.00 or above

### Regular

- 1.GPA. = 2.50 or above

No Debt, Not being cut for more than 19 disciplinary points



# Quota for M.1 & M.4

## Quota Requirements for M.4

Consider from 5 Semesters)

### IEP

#### Science – Mathematics (SM)

- 1.GPA. = 2.75 or above
- 2.English = 3.00 or above
- 3.Maths = 2.50 or above
- 4.Science = 2.50 or above

#### English – Mathematics (EM)

- 1.GPA. = 2.50 or above
- 2.English = 3.00 or above
- 3.Maths = 2.50 or above

#### English – Language (EL)

- 1.GPA. = 2.50 or above
- 2.English = 3.00 or above

### SAM

- 1.GPA. = 3.00 or above
- 2.Science = 3.00 or above
- 3.Maths = 3.00 or above

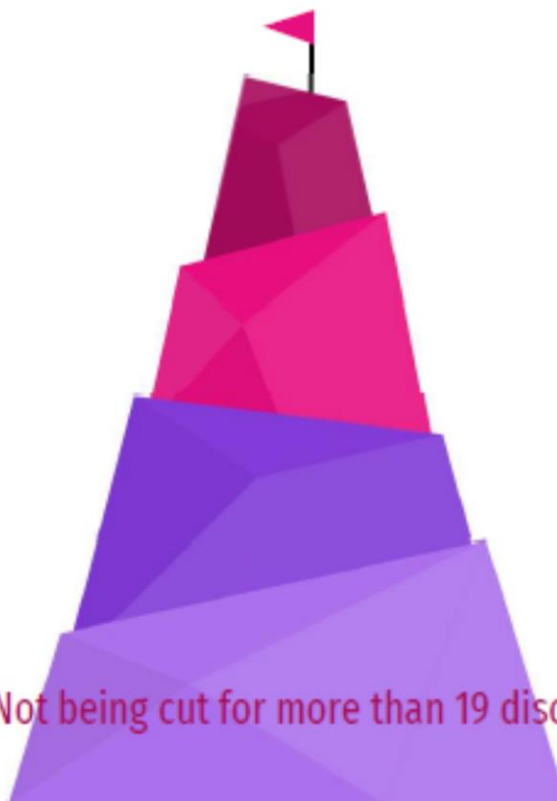
### LIP

- 1.GPA. = 2.75 or above
- 2.English = 3.00 or above

### Regular

- 1.GPA. = 2.50 or above

No Debt, Not being cut for more than 19 disciplinary points



# School Projects in September



**MASTERING IELTS WRITING**

Grade 9 - 12

Craft an essay, shape a future!

SUN 8th September 2024

8 am - 12 pm & 1 pm - 5 pm  
at room 201 IEP building

★ PRIZES ★  
Certificates of IELTS

ABOUT THE EVENT

- Open to all students in grades 9-12.
- Essays must be original and written by the students
- Judging criteria include originality, clarity, structure, and adherence to the theme.
- Learn to write two kinds of IELTS Essays: TSO & 250 words.

Instructor

Mastering IELTS Writing



International Education Program for Basic Education (IEP)

## IEP TALENT SHOWCASE

MUSIC | SINGING | DANCING |  
ARTWORK | SPEECH | SPORTS

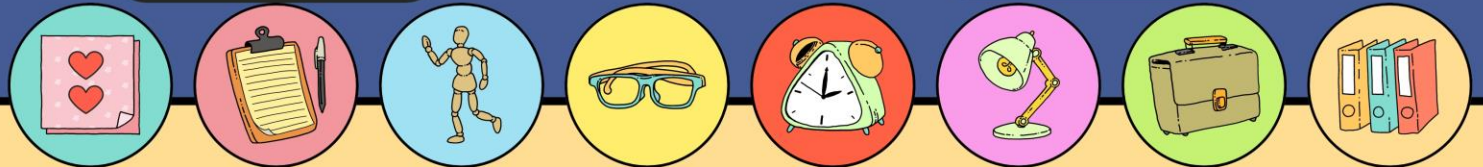
Performance & Exhibition By IEP students

03.40 - 04.10 PM  
On Fridays after school

IEP talent Showcase



Meditation

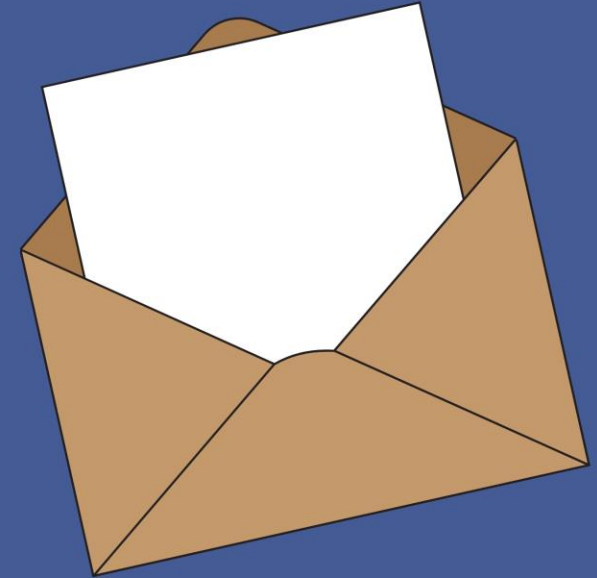


# Communication channels



FB: IEP Pibboonbumpen  
Demonstration School

website: [st.buu.ac.th](http://st.buu.ac.th)



Homeroom teachers &  
parent LINE group

IEP FB &  
School website

Letter from school



# New Facility

- Air Purify in classrooms and school area
- Installation in 2/2024 during OCT - DEC 2024)

**MITSUBISHI ELECTRIC**  
Changes for the Better

## เครื่องฟอกอากาศ MA-E85R-T

ตรวจจับฝุ่นได้ตรงจุด อากาศสะอาดทันใจ  
ครอบคลุมพื้นที่ได้ถึง 60 ตร.ม.

ค่า CADR 508 m3/h



\*เฉพาะรุ่น MA-E85R-T

ใหม่ เซ็นเซอร์ตรวจจับฝุ่น PM2.5

ตรวจจับฝุ่น PM2.5 และทำการส่งอากาศที่บริสุทธิ์  
ได้อย่างรวดเร็วและแม่นยำ



# Dropping off & Picking up students

- Parents can park in front of the gate ONLY to pick up or drop off students in order not to create a traffic jam.
- To wait for the students, parents must park their car at the parking lot.
- Please listen to the security guard. Your cooperation is greatly appreciated.



Thank You  
for attending

